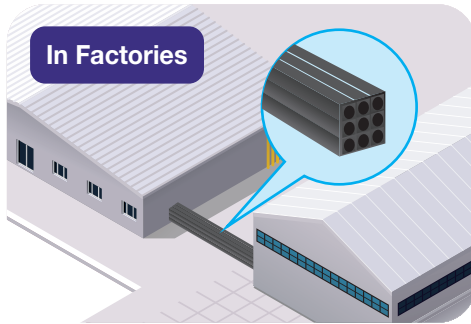


Square shaped Cable Duct for multiple cable laying
In compliance with JIS C3653-3 SELF-EXTINGUISHABLE FLAME RETARDANT PIPE

EFLEX Square Duct

An innovative solution for installing multiple cables in limited spaces



1

Stable and Easy to Stack

2

Simple & Fast Installation

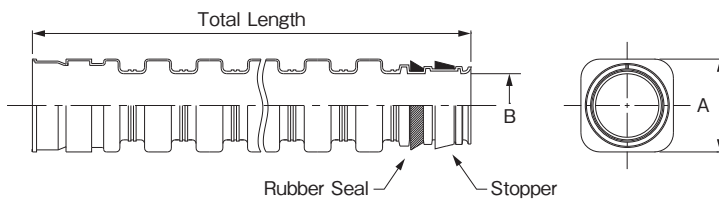
3

Less Trench & No Pipe Pillow Required

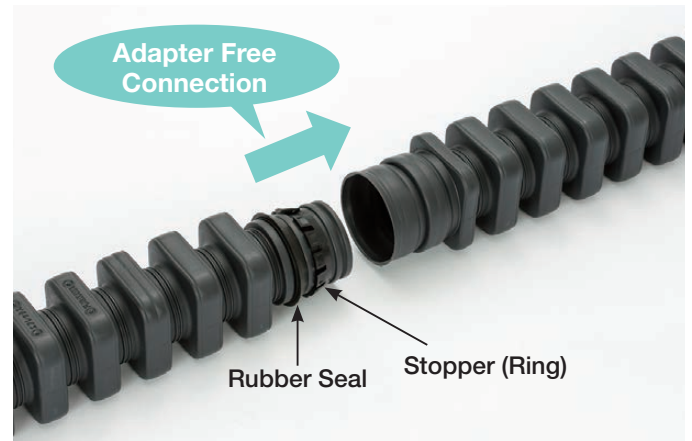
4

Easy to Bend

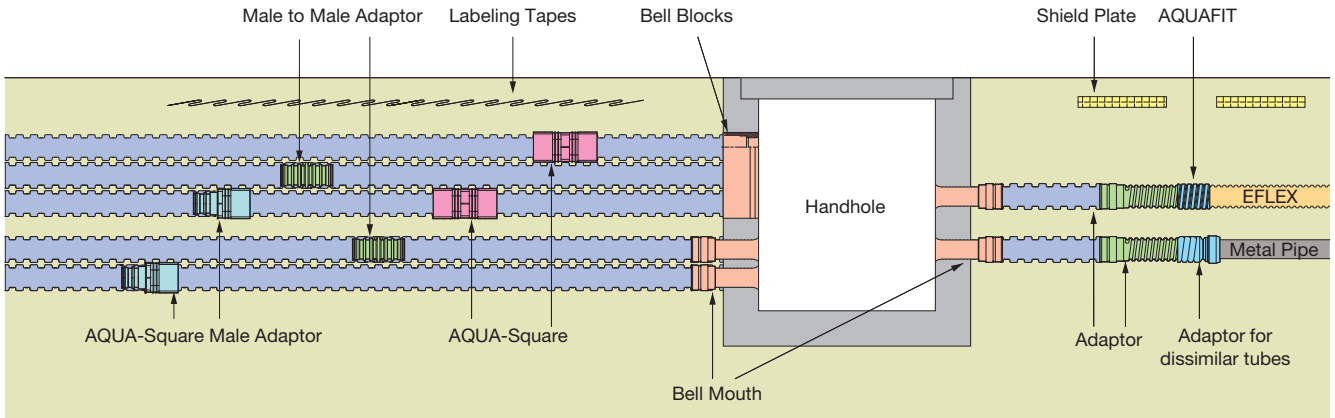
EFLEX Square Duct : Size and Dimension



Series	A: Outer Dimension (mm)	B: Inner Diameter (mm)	Total Length (mm)	Effective Length (mm)
50	73	50	5,300	5,250
81	105	81		
100	125	100		
130	162	130		
150	184	150		



EFLEX Square Duct : System & Accessories



AQUA-Square

Joint used in intervals (after cutting EFLEX Square Duct)

Features

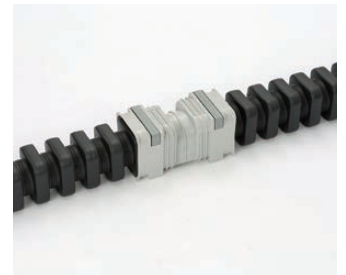
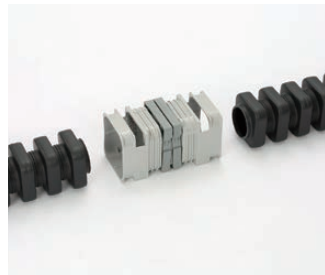
- Easy Joining Mechanism**
 Non-woven, water-expansion cloth used (no rubber seals). EFLEX Square Duct can be inserted using little force.
- Clear Cutting Position**
 Cutting Guides on the tube for easy cutting.
- No Tools Required**
 Easy to join by hand.



Cut in between the ridges



Guides allow easy cutting



1) Cut the pipe

2) Insert the pipe into AQUA-Square

3) Insert the One-Touch Rings

4) Join completed

AQUA-Square Male Adaptor

Adaptor used when converting the intermediate part of the pipe to male structure, and to insert it to the female structured part. (eg. Adjustment of pipe lengths, utilizing pipe ends etc.)



Male to Male Adaptor

Adaptor for converting the female end to male structure. Used when connecting female-female end, or when connecting the female end to the Long Bell Mouth.



Adaptor for Joining Other Types of Pipe Conduits

Adaptor used for connecting male end to dissimilar tubes. (Used together with Flame Retardant EFLEX parts)



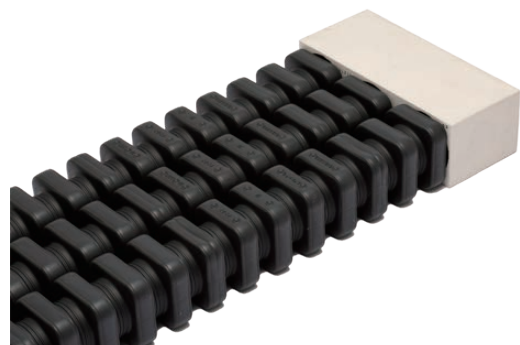
Long Bell Mouth

Used when connecting to handhole. (3 types available depending on wall thickness)



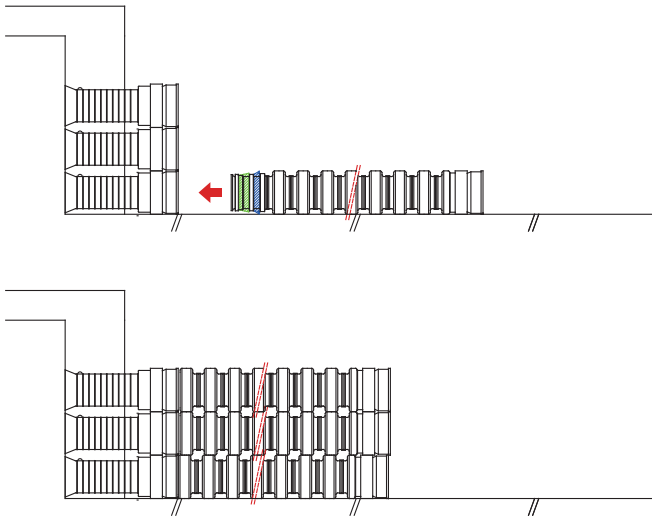
Bell Block

Used when connecting to handhole. Made of Resin concrete. Available in 1, 2, 3, 4, 6 and 9 way profiles.

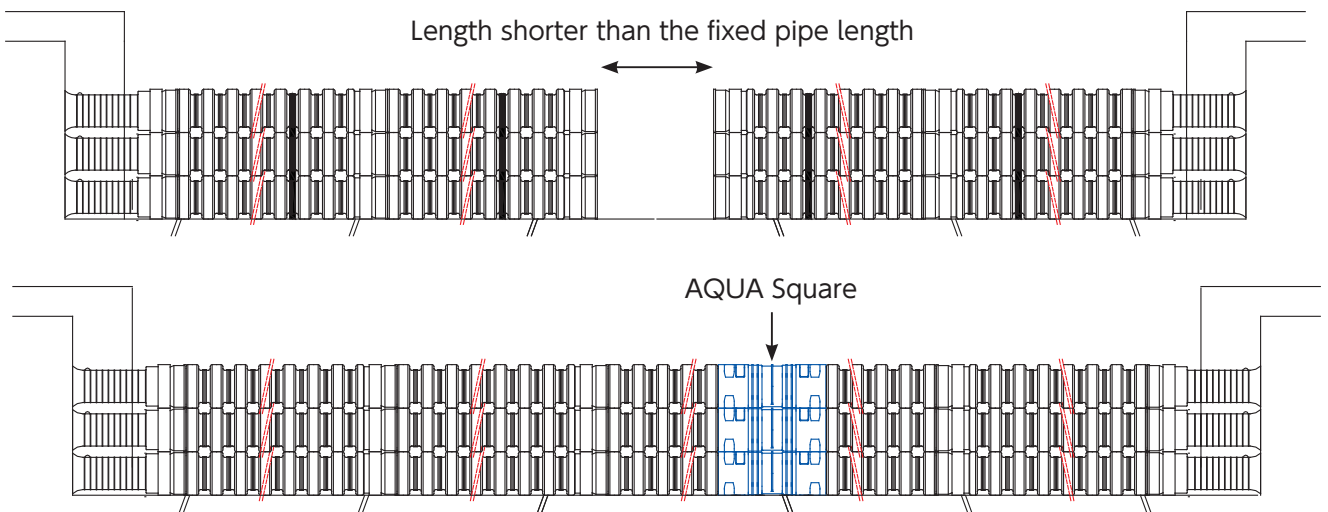


Installation Method (Outline)

Insert the male end of the EFLEX Square Duct to either the Long Bell Mouth or Bell Block, from the bottom layer.



When the length in between the pipes from both ends of the handholes is shorter than the fixed pipe length, adjust to the required length, by using AQUA-Square.



Please refer to the Installation manual for details

FURUKAWA ELECTRIC CO., LTD. <https://www.furukawa.co.jp/eflex/english/>

HEAD OFFICE

Marunouchi Nakadori Bldg., 2-3, Marunouchi 2-chome, Chiyoda-ku, Tokyo 100-8322, Japan

Phone: +81-3-3286-3443 Fax: +81-3-3286-3965

e-mail: fec.kanro-global@furukawaelectric.com

* The products and their appearances, as described in this brochure, are subject to change without prior notice.
* Company and product names appearing in this publication are registered trademarks or trademarks of respective companies.

Export Control Regulations The products and/or technical information presented in this publication may be subject to the application of the Foreign Exchange and Foreign Trade Act and other related laws and regulations in Japan. In addition, the Export Administration Regulations (EAR) of the United States may be applicable. In cases where exporting or reexporting the products and/or technical information presented in this publication, customers are requested to follow the necessary procedures at their own responsibility and cost. Please contact the Ministry of Economy, Trade and Industry of Japan or the Department of Commerce of the United States for details about procedures.