

# MT24SM Low-Loss フェルール

## MT24SM Low-Loss ferrule

### MT24SM 低损耗插芯

**概要**  
Outline  
概要

超高精度成形技術を用いた24心のSM低ロスMTフェルールです。

24 fiber counts low-loss multi-fiber MT ferrule with ultra high precision mold technology.

高精度成型技术制作的单模24芯低损耗插芯。

**特長**  
Features  
特征

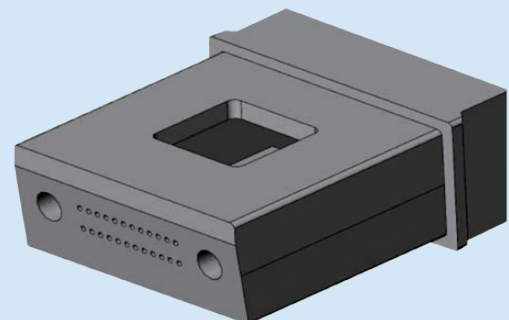
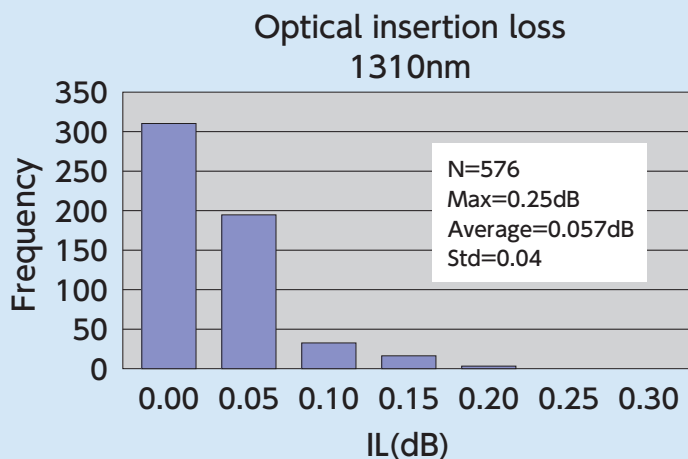
インターフェースが予め斜めに成形。これにより約20%の研磨時間削減が可能

Tilted end-face MT. This structure reduces the polish time by almost 20% of the conventional angle polish process.

插芯端面为斜面。可减少约20%研磨时间

**仕様**  
Specification  
规格

項目 Item 项目	仕様 Specification 规格
挿入損失 Insertion Loss 插入损耗	Typical = 0.1dB Max ≤ 0.35dB
大きさ Size 尺寸	3 × 7 × 8 [mm]
プレアングル角度 Pre-angle deg. 预倾角	8°



# MT Ferrule

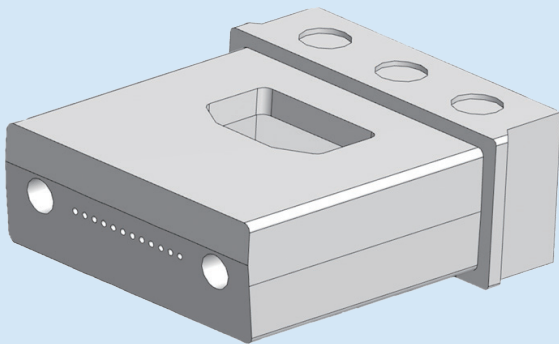
## Features

- High precision by in house molding die with deep technical understandings.
- High quality, fully made in Japan with long and abundant experience.
- Furukawa is one of the original developer of MT ferrule.

## Varieties

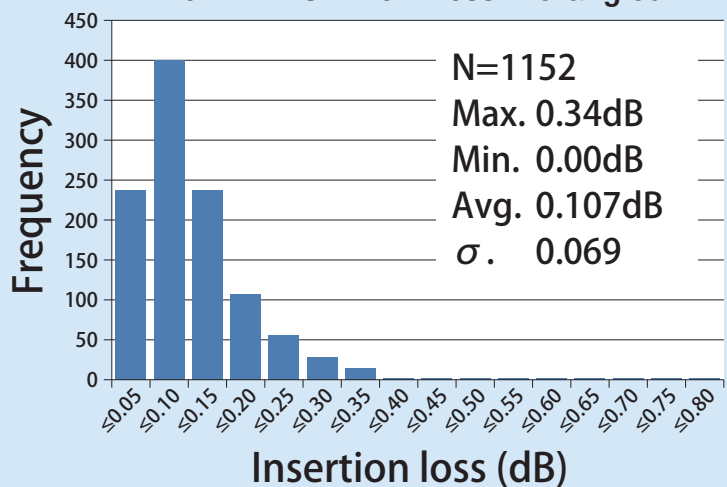
Type	MM	MM-LL	SM	SM-LL
Max. IL	0.5 dB	0.35 dB	0.7 dB	0.35 dB
MT12	✓	✓	✓	✓
MT24	✓	✓	✓	✓
MT48	✓	—	—	—
MT16	✓	✓	Under Development	Under Development
MT32	✓	✓	Under Development	Under Development

✓ : Pre-angled Type



MT Ferrule (12SM-Low Loss Pre-angled)

Insertion loss @1310nm  
for MT12SM-Low Loss Pre-angled



### Export Control Regulations

The products and/or technical information presented in this booklet may be subject to the application of the Foreign Exchange and Foreign Trade Act and other related laws and regulations in Japan. In addition, the Export Administration Regulations (EAR) of the United States may be applicable. In cases where exporting or re-exporting the products and/or technical information presented in this booklet, customers are requested to follow the necessary procedures at their own responsibility and cost. Please contact the Ministry of Economy, Trade and Industry of Japan or the Department of Commerce of the United States for details about procedures.