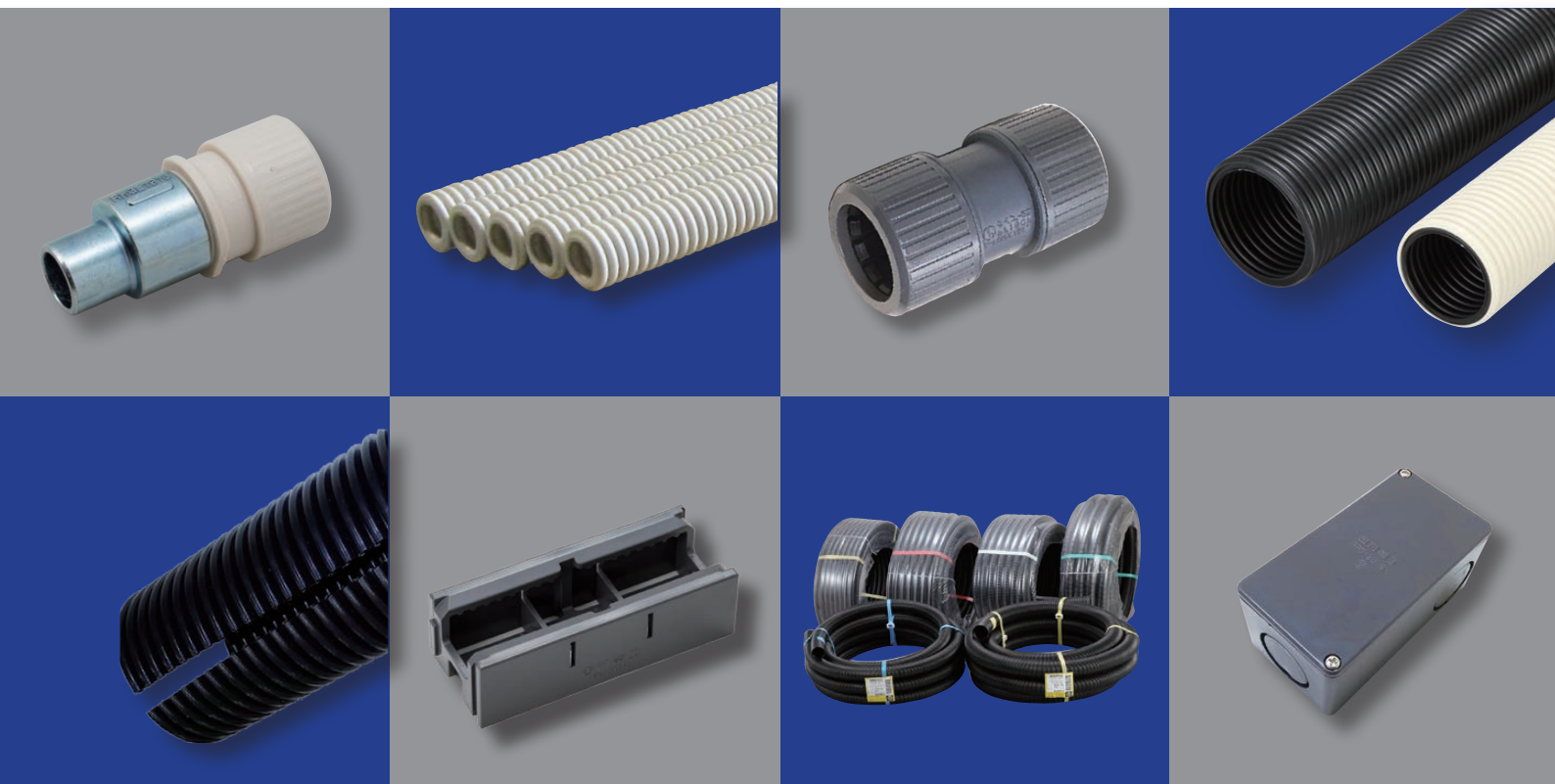


Indoor and outdoor ALL resin made

# PLAFLEKY exposed piping system



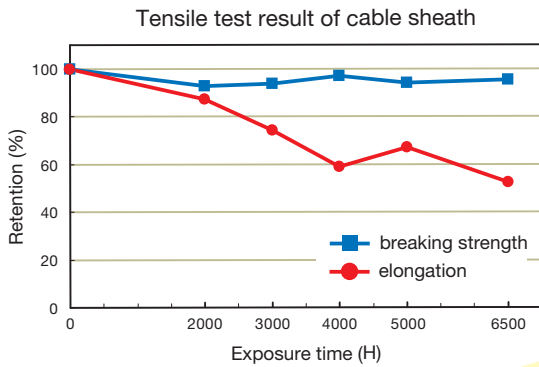
## Outdoor exposed piping to effortlessly!

The industry's highest level 30 years worth of weather resistance\*

Excellent waterproof joint (IPX5 equivalent)

Not rust as made of resin

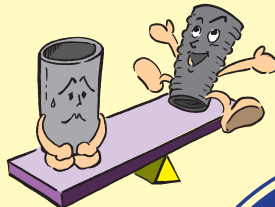
\*PFD high quality black only. Toughst, PFD other lineup is equivalent to 20 years



### Carrying

Light weight to carry

- E pipe19 : 530g/m
- Toughst16 : 157g/m
- PFD16 : 175g/m



### Processing

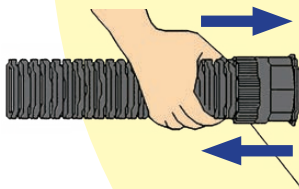
Easy cutting and bending

- [cutting] easy to cut with a knife
- [bending] can be bent by hand without tools



### Connection

One touch connection possible



Easy points compared to steel pipe

### Piping

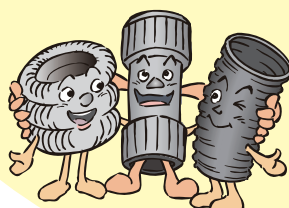
Can be bent at right angles



Universal box

### Parts

Parts are common with PFS



No need to select components for each pipe

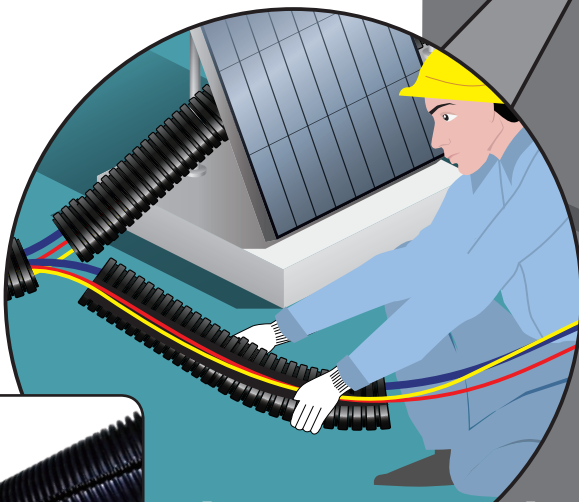
Easy connection to metal box



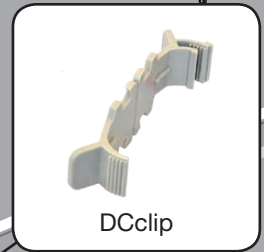
Metal Box Adapter

# Furukawa Electric PLAFLEKY have been used everywhere.

**Straight!!**

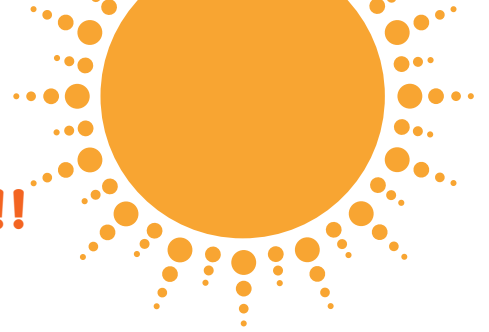


**Slits can make work easier!!**

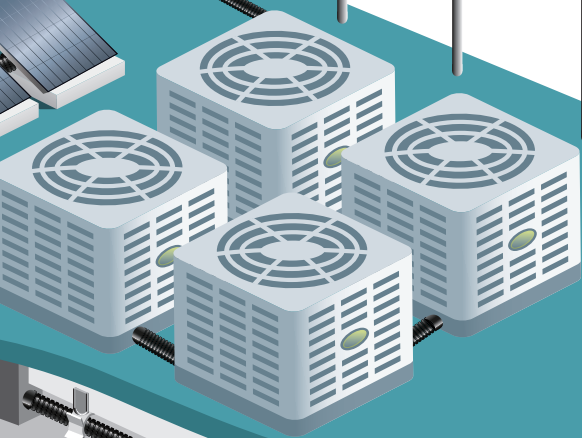


**Bends well!!**

**Excellent weather resistance!!**



Waterproof coupling



**Round box coming soon!!**

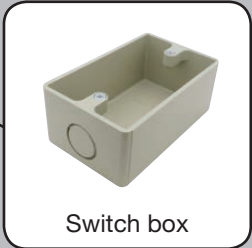


P clip

**Excellent workability!**



Saddle with Saddlebase



Switch box



Universal box



Metal box adapter

**Can be loaded on vans and elevators!!**



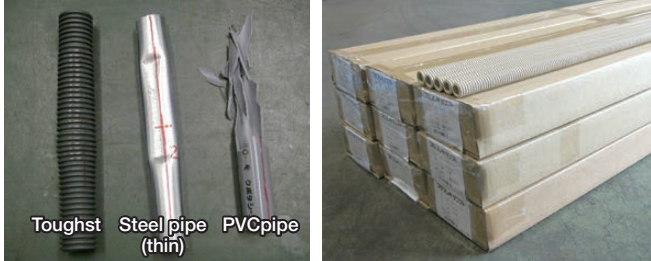
**Easy to transport!!**

**No rust even in sea water!**

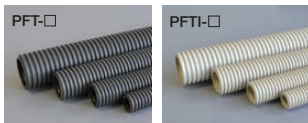


## Features of PLAFLEKY TOUGHST

- Tough pipe equivalent or superior to steel pipe.
- Straight pipes that can be bent.
- 2.5m straight pipe packaged in a box, which can be loaded in vans or elevators.



### PLAFLEKY TOUGHST



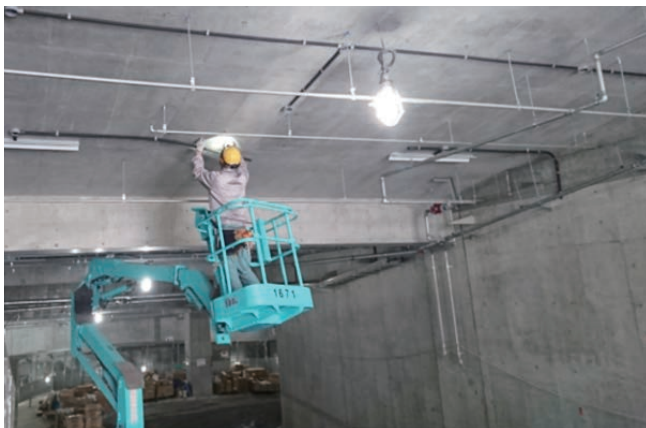
| Item No. Gray | Item No. Ivory | Length (m) | Weight/ piece (kg) |
|---------------|----------------|------------|--------------------|
| PFT-16        | PFTI-16        | 2.5        | 0.4                |
| PFT-22        | PFTI-22        | 2.5        | 0.55               |
| PFT-28        | PFTI-28        | 2.5        | 0.75               |
| PFT-36        | PFTI-36        | 2.5        | 1.0                |

### PLAFLEKY TOUGHST L



| Item No. Gray | Item No. Ivory | Length (m) | Weight/ piece (kg) |
|---------------|----------------|------------|--------------------|
| PFTL-42       | PFTLI-42       | 2.5        | 1.4                |
| PFTL-54       | PFTLI-54       | 2.5        | 1.75               |

## Construction example of PLAFLEKY TOUGHST



Easy installation at the ceiling due to its light weight.



Straight conduits allowing neat installation.

## Features of PLAFLEKY PFD

- The minimum bending radius is 3DR (size42.54) (Conventional products are 6DR)



### PLAFLEKY PFD



| Item No. High quality black | Length (m) | Weight/ coil (kg) |
|-----------------------------|------------|-------------------|
| PFDK-16                     | 50         | 9                 |
| PFDK-22                     | 50         | 15                |
| PFDK-28N                    | 30         | 8                 |
| PFDK-36N                    | 20         | 8                 |

| Item No. Gray | Item No. Ivory | Item No. High quality black | Length (m) | Weight/coil (kg) |
|---------------|----------------|-----------------------------|------------|------------------|
| PFD-42        | PFDI-42        | PFDK-42                     | 10         | 5.0              |
| PFD-54        | PFDI-54        | PFDK-54                     | 10         | 6.2              |

- 2 new sizes available for larger cables.

## Construction example of PLAFLEKY PFD



Easy installation at limited spaces where bends are required, due to its flexibility.

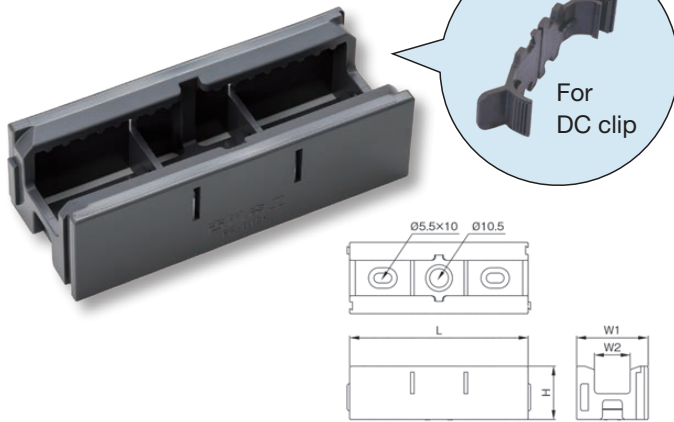


Suitable for connecting apparatus to solar power equipment requiring weather resistance.

# Introduction of new products

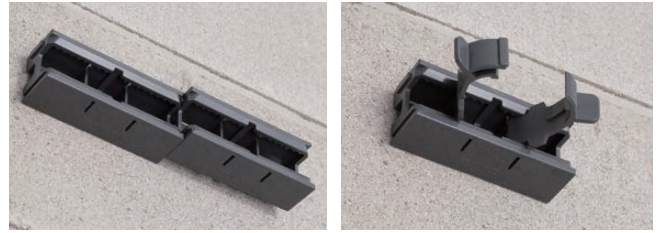
## NEW Plachan

An innovative polymer made channel, to fix conduits.



Combination of parts, allowing adjustable length.

Fixes the conduit, allowing both hands available to work.



Easy extension due to its joint system.

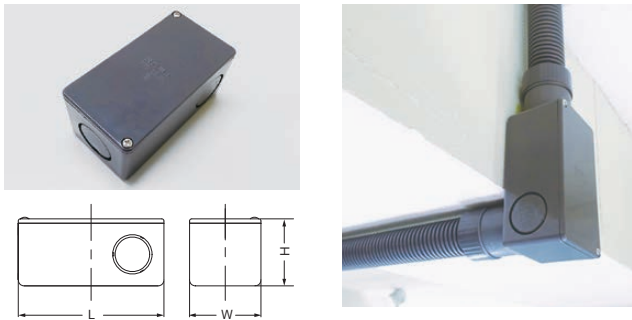
Clips can be semi-fixed to allow easy installation.

| Color | Item No.  | L (mm) | H (mm) | W1 (mm) | W2 (mm) |
|-------|-----------|--------|--------|---------|---------|
| Gray  | PF-D1CH   | 100    | 30     | 40      | 20      |
| Ivory | PF-D1CH-I |        |        |         |         |

Hanging use prohibited.  
Rack support use prohibited.

## NEW Universal box

Making right angled connection of conduits possible at walls and beam parts.  
Containing functions to temporary fix the connector nut.

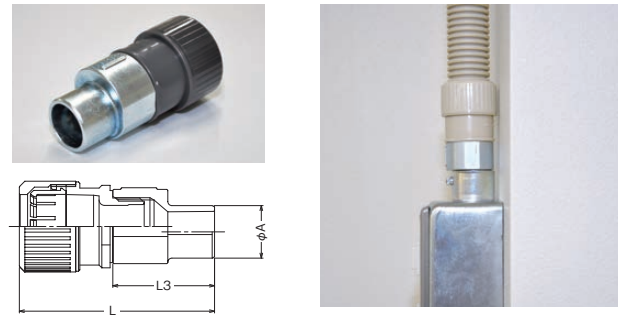


| Color | Item No.    | Sutable connector         | W (mm) | L (mm) | H (mm) |
|-------|-------------|---------------------------|--------|--------|--------|
| Gray  | PFS-22UBX   | PFS-16KLR<br>PFS-22KR     | 49     | 100    | 46     |
|       | PFS-28UBX   | PFS-28KR                  | 63     | 120    | 55     |
| Ivory | PFS-22UBX-I | PFS-16KLR-I<br>PFS-22KR-I | 49     | 100    | 46     |
|       | PFS-28UBX-I | PFS-28KR-I                | 63     | 120    | 55     |

\* Can also be used for 45 degrees Connector and bending connectors.

## NEW Metal box adapter

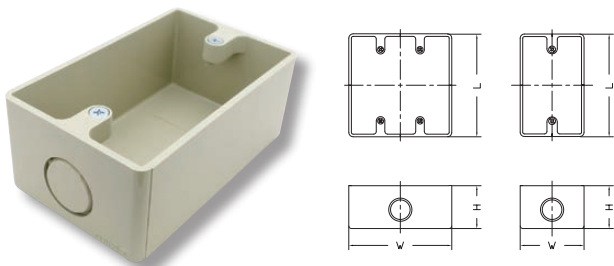
Allows easy connection to the hub of Exposed Metal box.



| Color | Item No.    | Sutable size | L (mm) | L3 (mm) | $\phi A$ (mm) |
|-------|-------------|--------------|--------|---------|---------------|
| Gray  | PFS-16EHA   | PFT-16/E19   | 72     | 37      | 19.1          |
|       | PFS-22EHA   | PFT-22/E25   | 82     | 39      | 25.4          |
| Ivory | PFS-16EHA-I | PFTI-16/E19  | 72     | 37      | 19.1          |
|       | PFS-22EHA-I | PFTI-22/E25  | 82     | 39      | 25.4          |

\* The adapter fits for PLAFLEKY PFD/PFS series.

## NEW Exposed switch box



| Color | Item No. | Sutable connector | W (mm) | L (mm) | H (mm) |
|-------|----------|-------------------|--------|--------|--------|
| Gray  | SW150X   | PFS-16KLR         | 74     | 119    | 50     |
|       | SW250X   | PFS-22KR          | 120    | 119    | 50     |
| Ivory | SW150X-I | PFS-16KLR-I       | 74     | 119    | 50     |
|       | SW250X-I | PFS-22KR-I        | 120    | 119    | 50     |

## FURUKAWA ELECTRIC CO., LTD.

Marunouchi Nakadori Bldg.,  
2-3, Marunouchi-2-chome, Chiyoda-ku,  
Tokyo, Japan 100-8322  
Tel. +81-3-3286-3052 Fax. +81-3-3286-3694