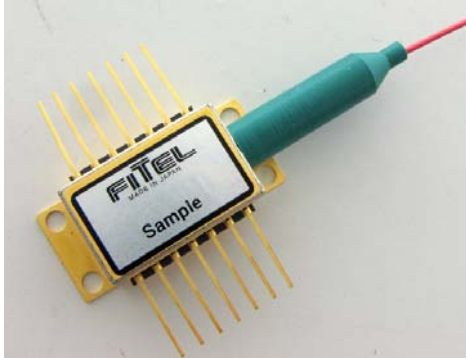


## Wavelength Selected CW DFB Laser Module



### Applications

- OC-192/STM-64 Transmission Systems
- Probe Light Source

### Descriptions

- FRL15DCWx-A8x-Wxxxx series of DFB laser module is designed for OC-192/STM-64 applications with external intensity modulator and probe light source.
- The polarization maintaining fiber pigtail enables to directly connect a modulator without polarization control. The polarization state of output laser beam is maintained to a consistent orientation.
- A strained multi-quantum well DFB laser diode chip is integrated with optical isolator, thermo-electric cooler (TEC), thermistor and power monitor photodiode in an industry standard hermetically sealed 14 pin butterfly package.
- This laser module complies with telecom requirements described in Telcordia™ GR-468 and is manufactured in an ISO™9001 certified production line.

### Features

- High optical output power up to 40mW
- High side mode suppression ratio(SMSR)
- Selected wavelength between 1530nm and 1610nm available
- Narrow linewidth available
- RoHS compliant package

### Absolute Maximum Ratings

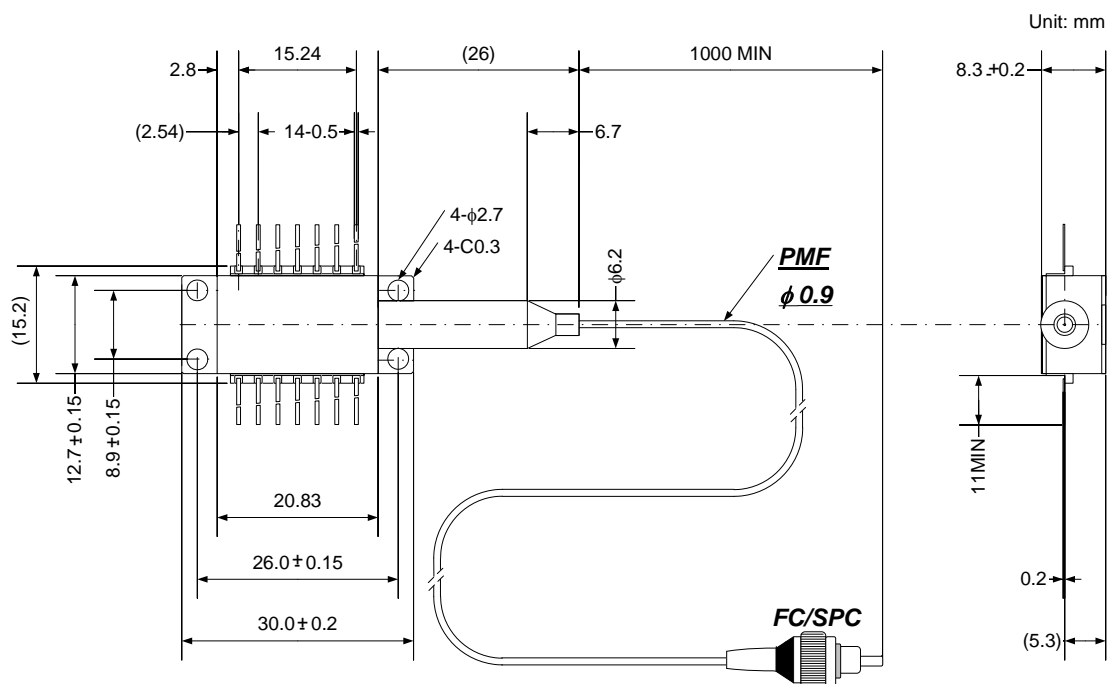
| Parameters                 | Sym.             | Min. | Max. | Unit | Parameters              | Sym.             | Min. | Max. | Unit |
|----------------------------|------------------|------|------|------|-------------------------|------------------|------|------|------|
| Storage Temperature        | T <sub>stg</sub> | -40  | 85   | °C   | PD Reverse Voltage      | V <sub>rPD</sub> | -    | 20   | V    |
| Operating Case Temperature | T <sub>c</sub>   | -5   | 70   | °C   | PD Forward Current      | I <sub>fPD</sub> | -    | 5    | mA   |
| LD Reverse Voltage         | V <sub>rLD</sub> | -    | 2    | V    | TEC Current             | I <sub>tec</sub> | -    | 1.6  | A    |
| LD Forward Current         | I <sub>fLD</sub> | -    | 350  | mA   | TEC Voltage             | V <sub>tec</sub> | -    | 2.6  | V    |
| LD Operating Temperature   | T <sub>LD</sub>  | 20   | 35   | °C   | Lead Soldering          | -                | -    | 260  | °C   |
| Relative Humidity          | RH               | 0    | 85   | %    | Lead Soldering Duration | -                | -    | 10   | sec  |
| Fiber Bend Radius          | -                | 30   | -    | mm   | Torque Force            | -                | -    | 0.1  | Nm   |
| Fiber Axial Pull Force     | -                | -    | 9.8  | N    | (Flatness : <20μm)      | -                | -    | -    | -    |

**Specifications** ( $T_c=25^\circ\text{C}$ , BOL\*<sup>1</sup> unless otherwise specified)

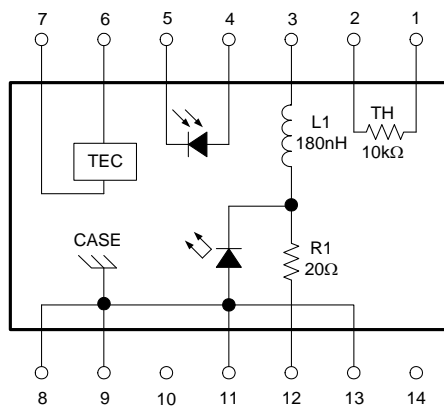
| Parameters                    | Symbol          | Min.        | Typ.      | Max.        | Unit             | Conditions   |
|-------------------------------|-----------------|-------------|-----------|-------------|------------------|--|
| Optical Output Power          |                 |             |           |             |                  |  |
| FRL15DCWA                     | Pf              | 10          | -         | -           | mW               | CW   |
| FRL15DCWB                     |                 | 20          | -         | -           |                  |  |
| FRL15DCWD                     |                 | 40          | -         | -           |                  |  |
| LD Forward Current            |                 |             |           |             |                  |  |
| FRL15DCWA                     | If              | -           | -         | 80          | mA               | Rated power, CW  |
| FRL15DCWB                     |                 | -           | -         | 150         |                  |  |
| FRL15DCWD                     |                 | -           | -         | 300         |                  |  |
| LD Operating Temperature      | $T_{LD}$        | -           | 25        | -           | $^\circ\text{C}$ | Rated power, CW  |
| LD Forward Voltage            |                 |             |           |             |                  |  |
| FRL15DCWA, B                  | Vf              | -           | -         | 1.8         | V                | Rated power, CW  |
| FRL15DCWD                     |                 | -           | -         | 2.5         |                  |  |
| Threshold Current             | $I_{th}$        | -           | 15        | 40          | mA               |  |
| Wavelength                    | $\lambda$       | 1530        | -         | 1610        | nm               | Rated power, CW  |
| Wavelength tolerance          | $\Delta\lambda$ | $\lambda-3$ | $\lambda$ | $\lambda+3$ | nm               | Rated power, CW  |
| Linewidth (-3dB fullwidth)    |                 |             |           |             |                  |  |
| Standard                      | $\Delta\nu$     | -           | -         | 10          | MHz              | Rated Power, CW<br>Option C is available only<br>for FRL15DCWD.                        |
| Option A                      |                 | -           | -         | 5           |                  |  |
| Option B                      |                 | -           | -         | 2           |                  |  |
| Option C                      |                 | -           | -         | 1           |                  |  |
| Side Mode Suppression Ratio   | SMSR            | 35          | 45        | -           | dB               | Rated power, CW  |
| Optical Isolation             | Iso             | 30          | -         | -           | dB               |  |
| Relative Intensity Noise      |                 |             |           |             |                  |  |
| FRL15DCWA                     | RIN             | -           | -         | -133        | dB/Hz            | Rated power, CW<br>$O_{pRL} < -25\text{dB}^{*2}$<br>$100\text{MHz} < f < 10\text{GHz}$ |
| FRL15DCWB                     |                 | -           | -         | -138        |                  |  |
| FRL15DCWD                     |                 | -           | -         | -140        |                  |  |
| Monitor Current               |                 |             |           |             |                  |  |
| FRL15DCWA                     | Im              | 0.05        | -         | 1           | mA               | Rated power, CW<br>$V_{rPD}=5\text{V}$   |
| FRL15DCWB                     |                 | 0.1         | -         | 2           |                  |  |
| FRL15DCWD                     |                 | 0.15        | -         | 3           |                  |  |
| Monitor Dark Current          | $I_d$           | -           | -         | 100         | nA               | $V_{rPD}=5\text{V}$  |
| Tracking Error                | TE              | -0.5        | -         | 0.5         | dB               | $I_m=\text{constant}$ , $T_c=-5$ to $70^\circ\text{C}$                                 |
| TEC Current                   | $I_{tec}$       | -           | -         | 1.2         | A                | $T_c=70^\circ\text{C}$ , Rated power, CW   |
| TEC Voltage                   | $V_{tec}$       | -           | -         | 2.4         | V                | $T_c=70^\circ\text{C}$ , Rated power, CW   |
| Thermistor B constant         | B               | -           | 3900      | -           | K                |  |
| Thermistor Resistance         | R               | 9.5         | -         | 10.5        | $k\Omega$        | $T_{LD}=25^\circ\text{C}$  |
| Polarization Extinction Ratio | $E_r$           | 20          | -         | -           | dB               | Rated power, CW  |

\*<sup>1</sup> BOL : Beginning of Life\*<sup>2</sup>  $O_{pRL}$  : Optical Return Loss

## Dimensions and Pin Assignments

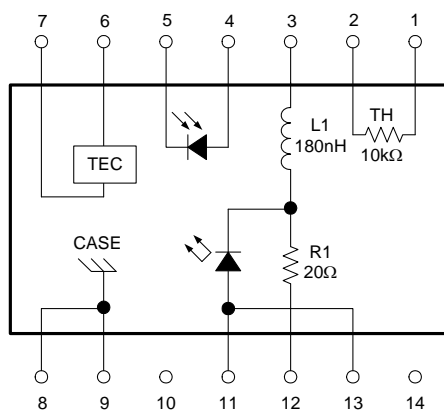


### LD Anode Ground



| PIN No. | Function           | PIN No. | Function                 |
|---------|--------------------|---------|--------------------------|
| 1       | Thermistor         | 8       | Case Ground              |
| 2       | Thermistor         | 9       | Case Ground              |
| 3       | LD Cathode(-)      | 10      | No Connect               |
| 4       | Monitor Anode(-)   | 11      | LD Anode(+), Case Ground |
| 5       | Monitor Cathode(+) | 12      | LD Cathode(RF)           |
| 6       | TEC(+)             | 13      | LD Anode(+), Case Ground |
| 7       | TEC(-)             | 14      | No Connect               |

### LD Anode Float

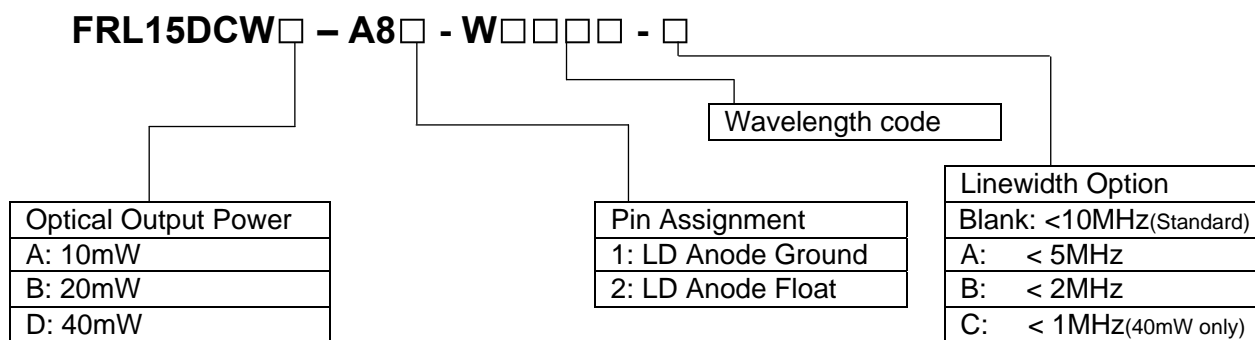


| PIN No. | Function           | PIN No. | Function       |
|---------|--------------------|---------|----------------|
| 1       | Thermistor         | 8       | Case Ground    |
| 2       | Thermistor         | 9       | Case Ground    |
| 3       | LD Cathode(-)      | 10      | No Connect     |
| 4       | Monitor Anode(-)   | 11      | LD Anode(+)    |
| 5       | Monitor Cathode(+) | 12      | LD Cathode(RF) |
| 6       | TEC(+)             | 13      | LD Anode(+)    |
| 7       | TEC(-)             | 14      | No Connect     |

## Optical Fiber Pigtail Specifications

| Parameters           | Specification  | Unit |
|----------------------|--|------|
| Fiber Type           | Polarization maintaining(PANDA) fiber<br>Frame retardant Hytrel™ coating(φ0.9mm) | -    |
| Nominal Fiber Length | Min.1,000  | mm   |
| Connector Type       | FC/SPC Connector   | -    |
| Polarization Axis    | Slow Axis  | -    |

## Ordering Information



## Safety Information

This product complies with 21 CFR 1040.10 and 1040.11, Class 3b laser product. Invisible laser radiation is emitted from the end of the fiber or connector. Avoid direct exposure to the beam.

Telcordia is a trademark of Telcordia Technologies, Inc.  
ISO is a trademark of The International Organization for Standardization.  
Hytrel is a trademark of DuPont.



Furukawa Electric reserves the right to improve, enhance and modify the features and specifications of FITEL products without prior notifications.

## FURUKAWA ELECTRIC CO., LTD.

**Japan**  
**Head Office**  
 2-2-3, Marunouchi  
 Chiyoda-ku  
 Tokyo 100-8322,  
 JAPAN  
 Tel: +81-3-3286-3253  
 Fax: +81-3-3286-3978  
<http://www.furukawa.co.jp>

**North America**  
**OFS**  
 1 Brightwave Blvd.  
 Carrollton, GA 30117, USA  
 Tel: +1-770-798-5555  
<http://www.ofsoptics.com>  
 E-mail: [info@ofsoptics.com](mailto:info@ofsoptics.com)

**Europe**  
**Furukawa Electric Europe Ltd.**  
 Furukawa House  
 77-85 Fulham Palace Road,  
 London W6 8JD, United Kingdom  
 Tel: +44-20-7313-5300  
 Fax: +44-20-7313-5310  
<http://www.furukawa.co.uk>  
<http://www.furukawa.co.uk/contactus.php>

**ASIA**  
**Furukawa Electric Hong Kong Ltd.**  
 Suite 1810, 18/F, Tower 2,  
 33 Canton Road, China Hong Kong City  
 Tsim Sha Tsui, Kowloon, Hong Kong  
 Tel: 852-2512-8938  
 Fax: 852-2512-9717  
<http://www.fehk.com.hk/>  
 E-mail: [guest@fehk.cn](mailto:guest@fehk.cn)